

## SHB20116 SACE Certificate II in Retail Cosmetics

**The Certificate II in Retail Cosmetics has been designed for students who are currently attending Secondary High School and want a career in the Retail Makeup Industry.**

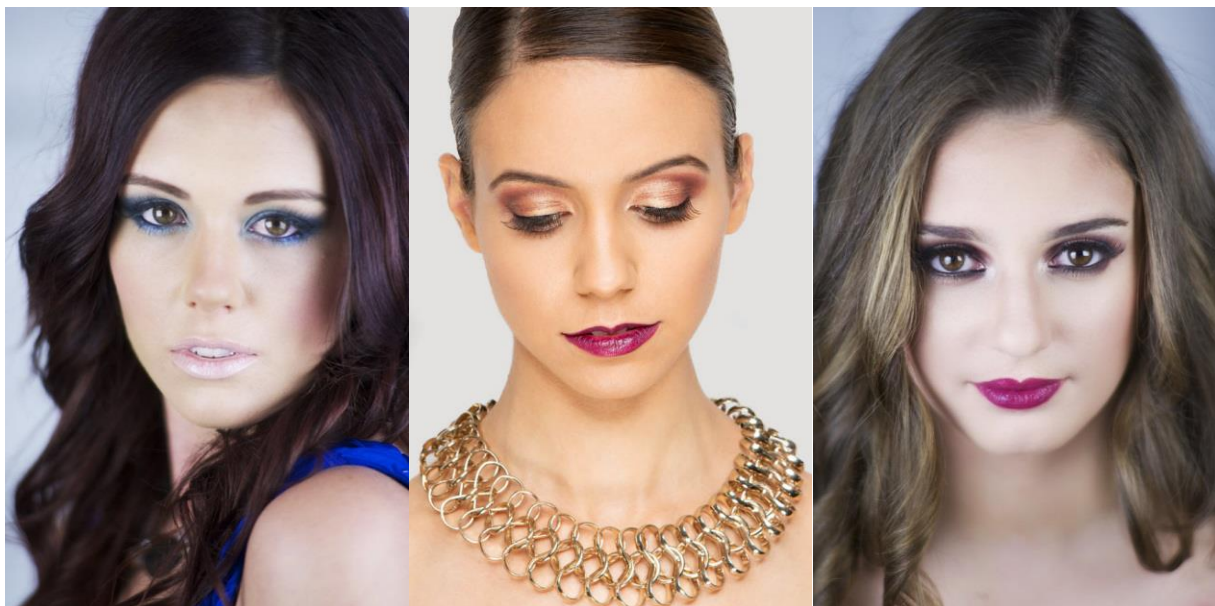
**If you are passionate about Makeup & Retail Makeup then the Certificate II in Retail Cosmetics with the Face Agency is the course for you.**

Our talented trainers will enthusiastically share their skills & knowledge with you as you learn the art of makeup.

Our Certificate II in Retail Cosmetics is a nationally accredited course and the Face Agency is a registered training organisation.

This qualification provides a pathway to work as a retail makeup sales consultant in beauty or cosmetic products and services. This includes beauty/hairdressing salons, retail outlets, pharmacies and department stores.

The Certificate II in Retail Cosmetics has a total of 15 Units. There are 10 core units and 5 elective units. We have put together an exciting selection of electives to compliment your core units for this accredited course.



## SHB20116 SACE Certificate II in Retail Cosmetics

### Core Units

	<b>Nominal Hours</b>
BSBWHS201 Contribute to health and safety of self and others	20
SHBBCCS001 Advise on beauty products and services	30
SHBBMUP002 Design and apply makeup	45
SHBXCCS001 Conduct salon financial transactions	25
SHBXCCS004 Recommend Products and services	20
SHBXIND001 Comply with organisational requirements within a personal services environment	45
SHBXIND002 Communicate as part of a salon team	30
SIRRMER001 Produce visual merchandise displays	35
SIRXIND003 Organise personal work requirements	20
SIRXSLS001 Sell to the retail customer	20

### Elective Units

SHBBMUP004 Design and apply remedial camouflage makeup	30
SHBBMUP001 Apply eyelash extensions	30
SHBBRES001 Research and apply beauty industry information	20
SHBBMUP003 Design and apply makeup for photography	30
SIRRINV001 Receive and handle retail stock	35

### Course Content

Makeup Product Knowledge  
 Makeup Application Principals  
 Bridal and Photographic Makeup Applications  
 Makeup and Lighting  
 Work Health and Safety  
 Industry and Personal Hygiene  
 Professional Conduct  
 Remedial Camouflage Makeup  
 Industry and Personal Hygiene  
 Visual Merchandising  
 Retail Makeup and Selling in a Retail Environment  
 Eyelash Extension Applications

## SHB20116 SACE Certificate II in Retail Cosmetics

### Course Duration

Part-Time

Evening Classes – 1 night per week for 28 weeks 6.30pm – 9.30pm

Day Classes – 1 day per week for 14 weeks 9.30am – 4.30pm

### Course Delivery

Training and assessment will be via a combination of self-paced learning and classroom training, located at the Face Agency head office, 122 Payneham Rd Stepney SA 5069.

Classes are conducted with theory presentations, trainer demonstrations and student practical applications. All training is delivered as a classroom workplace simulated environment.

Contact the Face Agency for the next available commencement dates.

### Student Requirements

To be eligible students need to be in year 10 to receive SACE STAGE 1 credits.

### The Enrolment Process

Please contact us to enquire about the next course dates or to book an appointment to enrol in person. If there are positions available and you have read the student handbook you can enrol in the program by completing our enrolment form. If there are no positions, we will advise you of the next available course. A parent or guardian must be present at the time of enrolment and interview process.

### Class Capacity

Face Agency provides professional and personal training due to small class sizes, maximum capacity of 10 students per class.

### Recognition of Prior Learning (RPL)

Recognition of Prior Learning is the process of formal recognition for skills and knowledge gained through previous learning such as:

- Life experiences
- Previous formal learning
- Employment

You may be eligible for recognition of prior learning for part or all of your intended study, based on your previous experiences and learning. For more information regarding RPL and how to apply, please discuss this with your trainer.

### Credit Transfer

You may be eligible for a credit transfer if you have previously undertaken training through a Registered Training Organisation. Credit transfer may be granted for one or more units or a full certificate level. Three major factors need to be considered:

- How current the qualification is
- Mapping to the current training and
- If the training was undertaken with a Registered Training Organisation

If you think you may be eligible for a credit transfer you will need to provide the original statement of attainment and/or certificate for your trainer to sight.

### Course fee information

Total Course Cost: \$2,100

- \$500 of your fees is an administration, non-refundable fee, payable on enrolment
- The course fee is to be paid via weekly instalments and in full by the: **Week 12** for the 14 week course or **week 26** for the 28 week course
- Once training has commenced in the course, no refund is available to participants who leave before finishing and are required to pay the full course fee
- The course fee includes all training material, a starter kit and use of Face Agency products during training
- Participants are required to purchase a replacement kit in the event that the original kit is lost, misplaced or the products used

